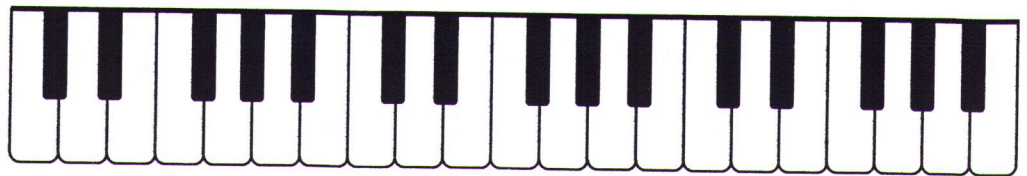
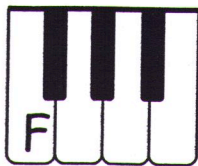


1. Beginning on A, print the music alphabet letters going up.

A    \_\_\_\_\_

2. **FACT:** The key **F** is always found at the bottom of the 3 black key group.

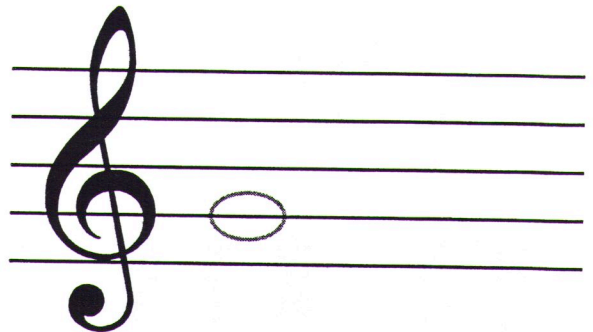
Find and name all the F's



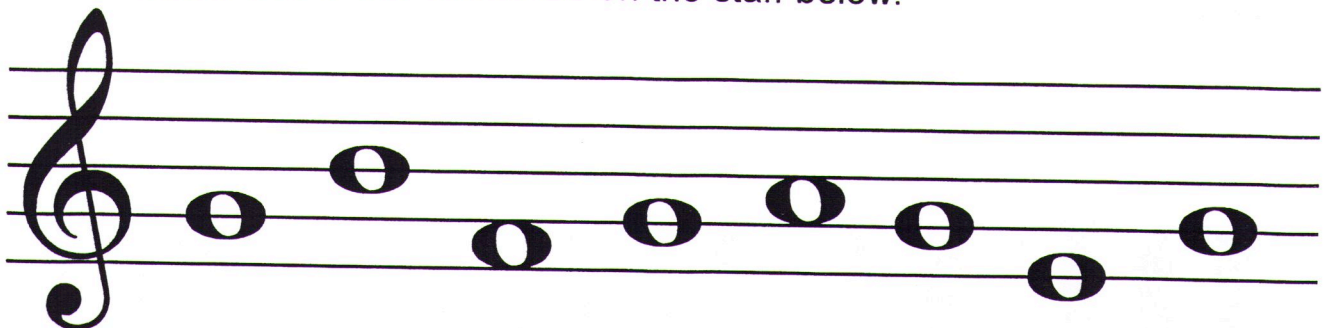
3. **FACT:** This is a **TREBLE CLEF**  It helps mark the note **G** on the staff.



*Trace the 1st  
Treble G  
and draw  
2 more.*



Circle **ONLY** the Treble G's on the staff below.



How many Treble G's did you find? \_\_\_\_\_